

Chairside Workflow Guide

for Irix Max, Irix Plus and Temporis
Dfab printed restorations

The digital workflow that we are about to introduce refers to the set of operations that are required for Dfab additive manufacturing. These operations are related in the order presented. Dfab technology was developed with the goal of reducing the time and steps required to create dental restorations

with user-friendly equipment that is easy to operate and has a short learning curve.

In restorative dentistry, digital workflow refers to the steps of intraoral scanning, computer-aided design, 3D printing, adhesive cementation and polishing of the finished restoration.

PRELIMINARY STEPS

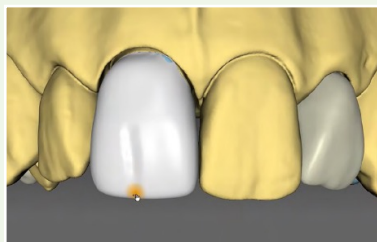
1



Intraoral Scanning*

To obtain a good scan of the patient's mouth work in a clean dry field with a proper tissue management, especially with subgingival preparations, and with a smooth and steady path. Transfer the intraoral scan files to your dental CAD software.

2



CAD design of the restoration*

Use the intraoral scans as models to design the restorations. Alternatively, outsource the design to a dental CAD service (classic or AI powered).

The Dfab line of 3D printers is compatible with any .stl file created with any dental CAD software.

DFAB – SETTINGS AND PRINT*

3a



Print Setup

Import the restoration .stl file in the Dfab/Lfab software:

- **Dfab** - Nauta Photoshade Pro software automatically places the .stl file in the printing area. The color gradient transitions are set by moving the blue cervical and incisal lines.

The job orientation and the printing supports are set automatically but the spatial orientation can be customized.

Nauta Photoshade Pro allows for the import of more files for a single print to optimize efficiency and cartridge usage.

3b



Cartridge & Platform Loading

An suitable cartridge of the preferred material, size, and color shade is loaded into the Dfab printer. Once the build platform is also inserted, the printer cover can be closed and the printing process can be started.

3c



Printing Process

Start the printing process from the software screen. The actual printing time is influenced by many factors such as the volume of the restoration and environmental conditions (e.g., from 8 m for a single crown, to 30 m for 18 veneers).

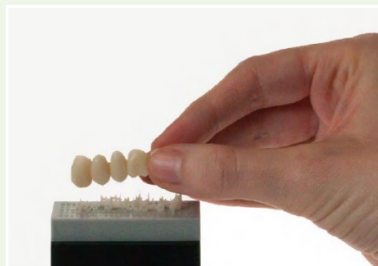
3d



Washing and Drying

After printing, place the platform in a shaker containing 95% ethyl alcohol and shake for 2 m with back and forth and side to side movements to remove uncured material. Use a semi-rigid bristle brush to thoroughly clean the occlusal and internal (intaglio) surfaces of the restoration. Dry with oil-free compressed air.

3e



Supports removal

Remove the restoration from the printing platform by grasping it firmly, in its entire width, and detach it with a twisting motion. The patented design of the supports avoids damage to the anatomy and does not require diamond disks or cutters for separation. Use a dental spatula to remove any remnants. Use a scalpel to separate very delicate restorations from the supports.

* Always refer to the relevant Instructions For Use / User manuals

This document is reserved for healthcare professionals as it contains information on medical devices that may create situations of danger to the health and safety of the patient if not correctly read, understood and applied by a professional.

3f



Post Curing with UV & Heat

This step in the Dcure device perfects the curing of the material, and thus its technical characteristics, increasing the degree of conversion, for the best performance. The cycles are automatic and color-coded according to the material used:

- Temporis - Blue
- Irix Plus - Green
- Irix Max - Magenta
- DS3000 & Precisa RD096GY - White

FINAL STEPS

4



Finishing & Polishing

According to the operator's preferred technique for hybrid composites.

5



Cementation

For best results, adhesive techniques and resin cements must be used; please refer to the Dfab specific information sheet.